

A large green graphic element on the left side of the page, featuring a white cutout that forms a stylized letter 'C' or a similar shape. The cutout is positioned to the left of the main title text.

2010 Hunter Coop Survey - Year #2

PANWTF Wild Turkey
Management
Committee

A thick, dark blue horizontal bar with rounded ends, positioned below the text of the PANWTF Wild Turkey Management Committee.

Objective

- Reach out to PA turkey hunters for real time in the field observations
- Energize NWTf members and non-members to get involved with Turkey Management
- Start putting together a long-term database as a possible source to look at positive or negative trends in a few different benchmarks and see how it relates

The process

- I was looking for 20 volunteers from each of the 6 regions of PA
- Press release and word of mouth were the biggest source of cooperators
- Everything is done via e-mail and people need to have basic spreadsheet skills and be willing to stay with this for several years

The Results - Cooperators

	2009	2010
NW region	13	11
SW region	24	27
NCR region	6	6
SC region	15	18
NE region	19	21
SE region	14	15
Total Cooperators	91	99
responses	50	41
reporting rate	55%	41%
repeat cooperators	N/A	30
NWTF members	50	58
non-members	26	17
unknown	15	24

number of days	1069	828
Hours scouted	842	709
Hours hunted	2596	1811
Total Hours	3438	2520

Gobbler data

	2009	2010	
Gobbling (# of birds)	2438	1513	
Gobbling Intensity	3.13	2.76	2. Gobbling only on roost 3. Roost & few tim
Called In	610	227	
Seen	1658	899	
You Killed	34	31	
Partner Killed	39	27	
Total killed	73	58	
Crippled	3	0	
Missed	30	22	
Miss/kill ratio	45%	38%	

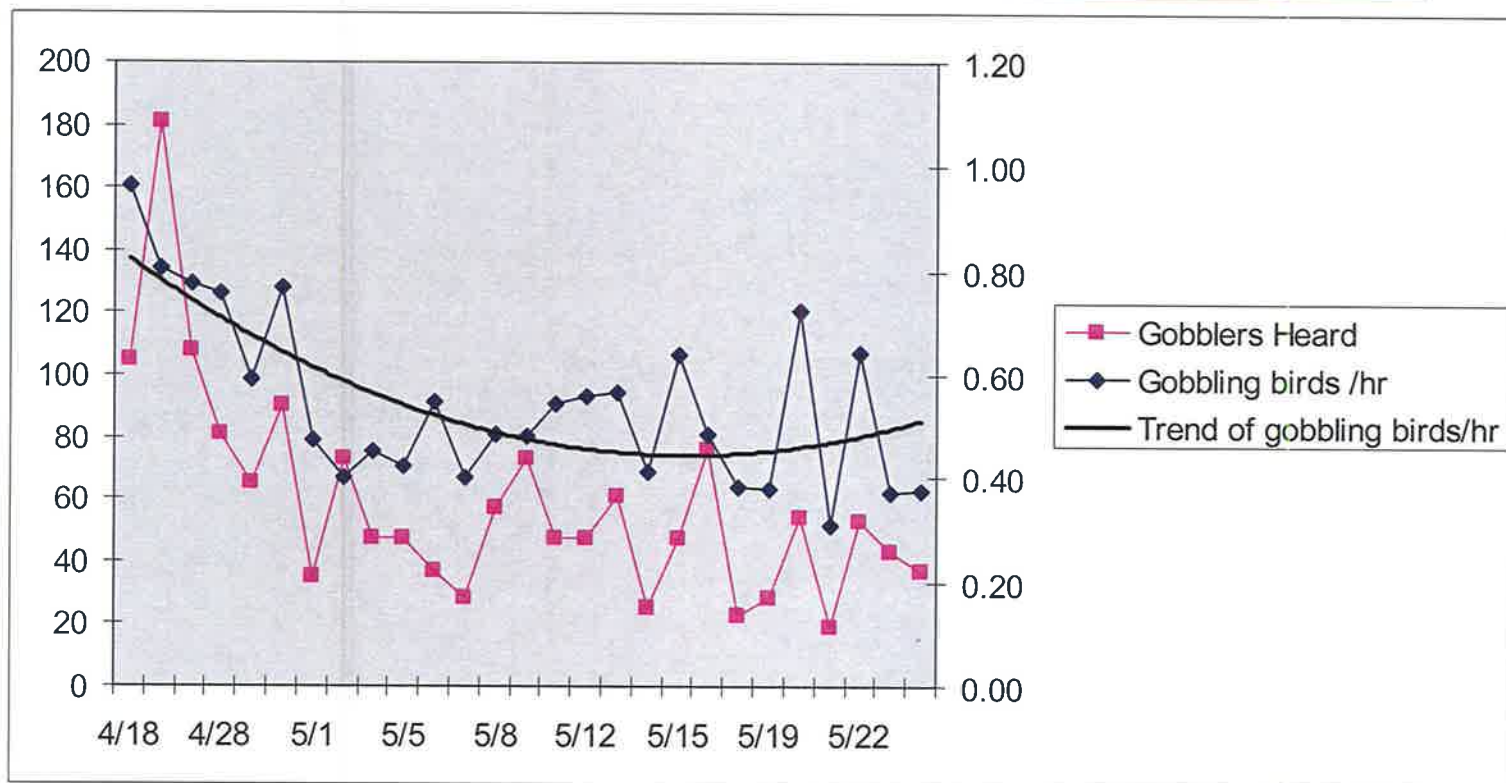
Hen Data

	2009	2010
Heard	694	434
Seen	2799	1501
Called In	280	107
Flushed Off Nest	20	8
Date of First Flush	4/17/09	4/3/10
Poults Seen	92	49
Date of First Poults	5/19/09	5/26/10

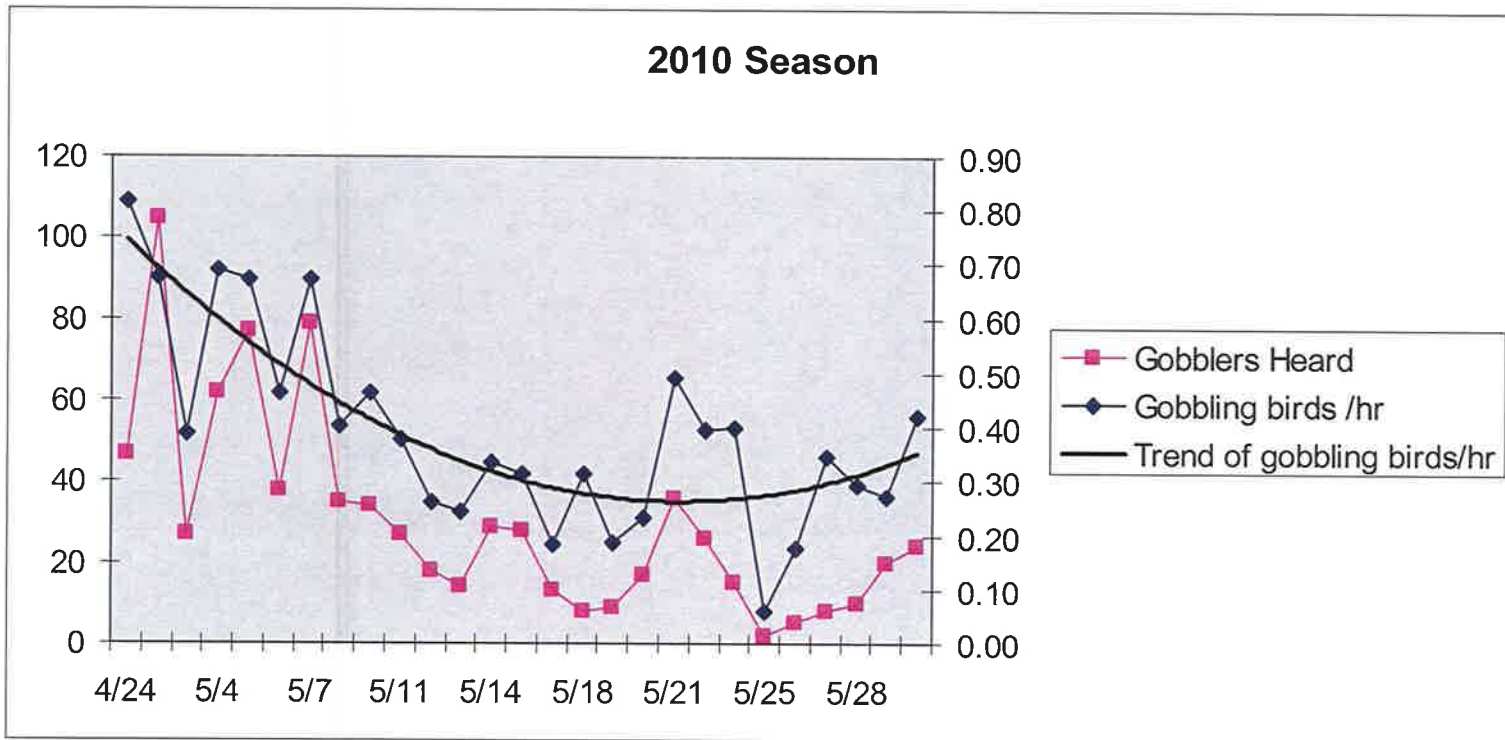
Predators

Predators				
Types ^o	2009 # of sightings	2009 Number	2010 # of sightings	2010 Number
9. Avian	65	125	63	41
5. Raccoon	32	45	13	18
2. Fox	24	24	7	8
7. Opossum	12	13	5	6
6. Coyote	11	16	12	13
8. Skunk	10	7	5	5
1. Bear	10	17	9	14
10. Other	9	9	4	4
4. Fisher	2	2	1	1
3. Bobcat	2	1	4	4
		259		114

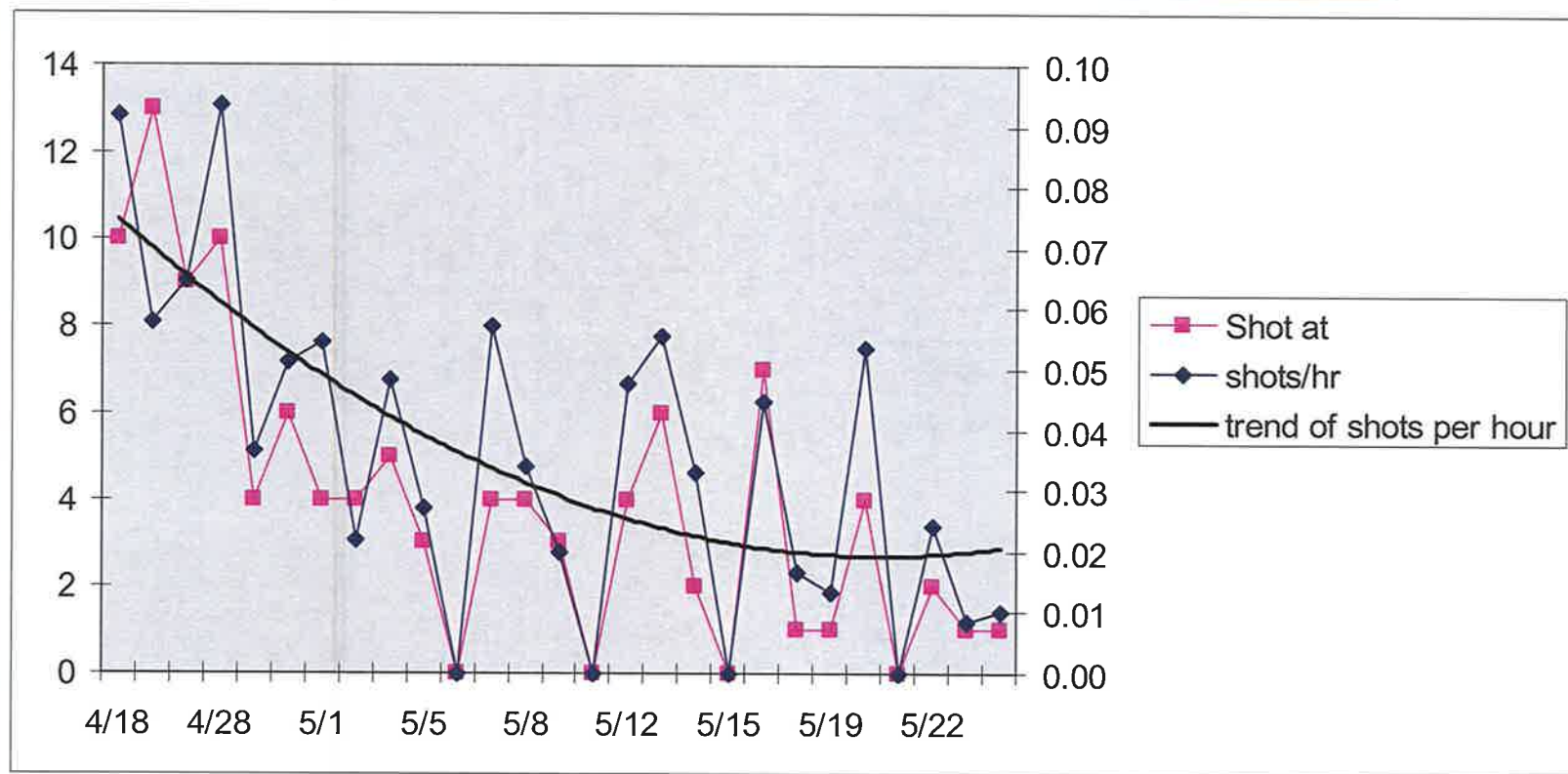
2009 Gobbling Activity



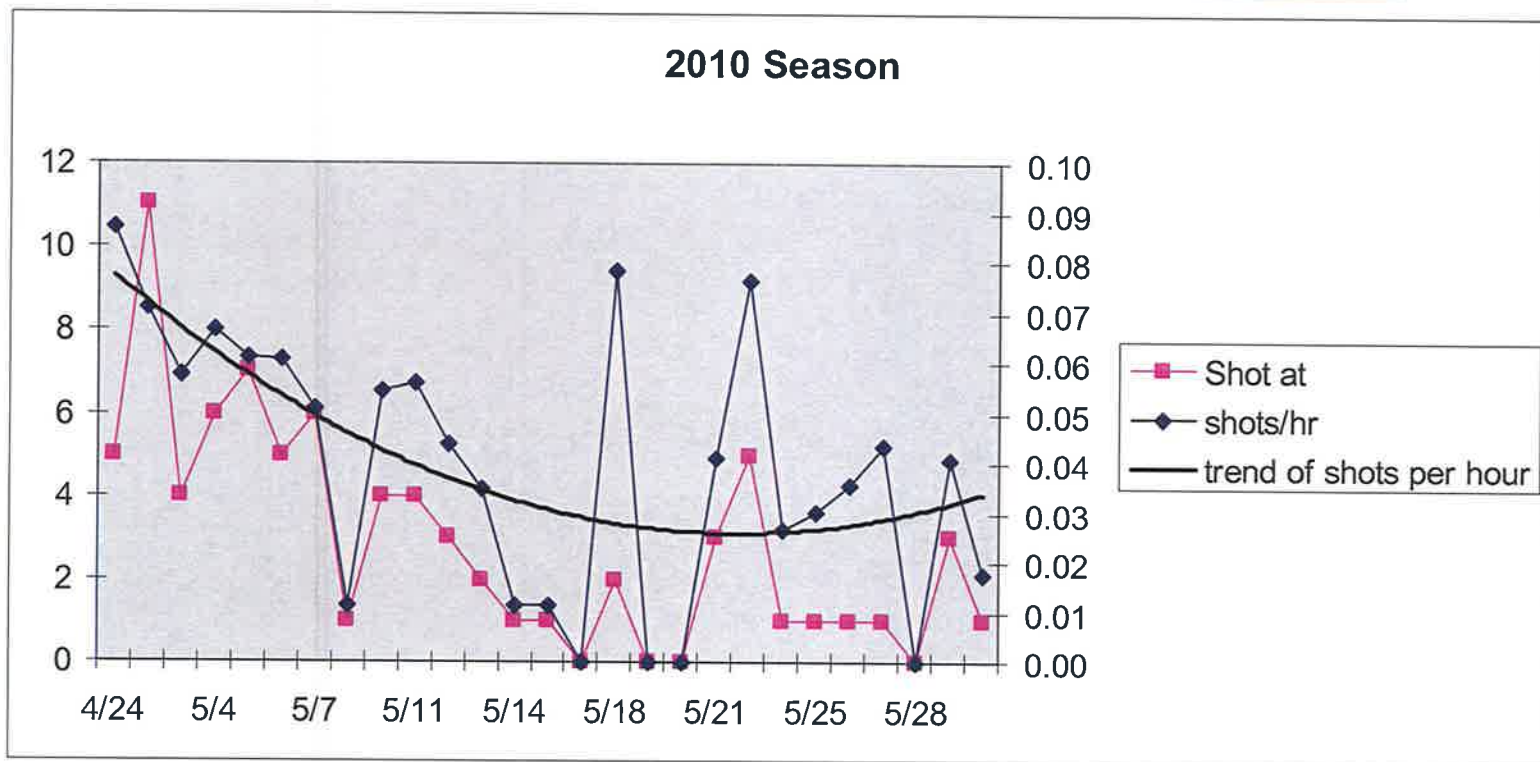
2010 Gobbling Activity



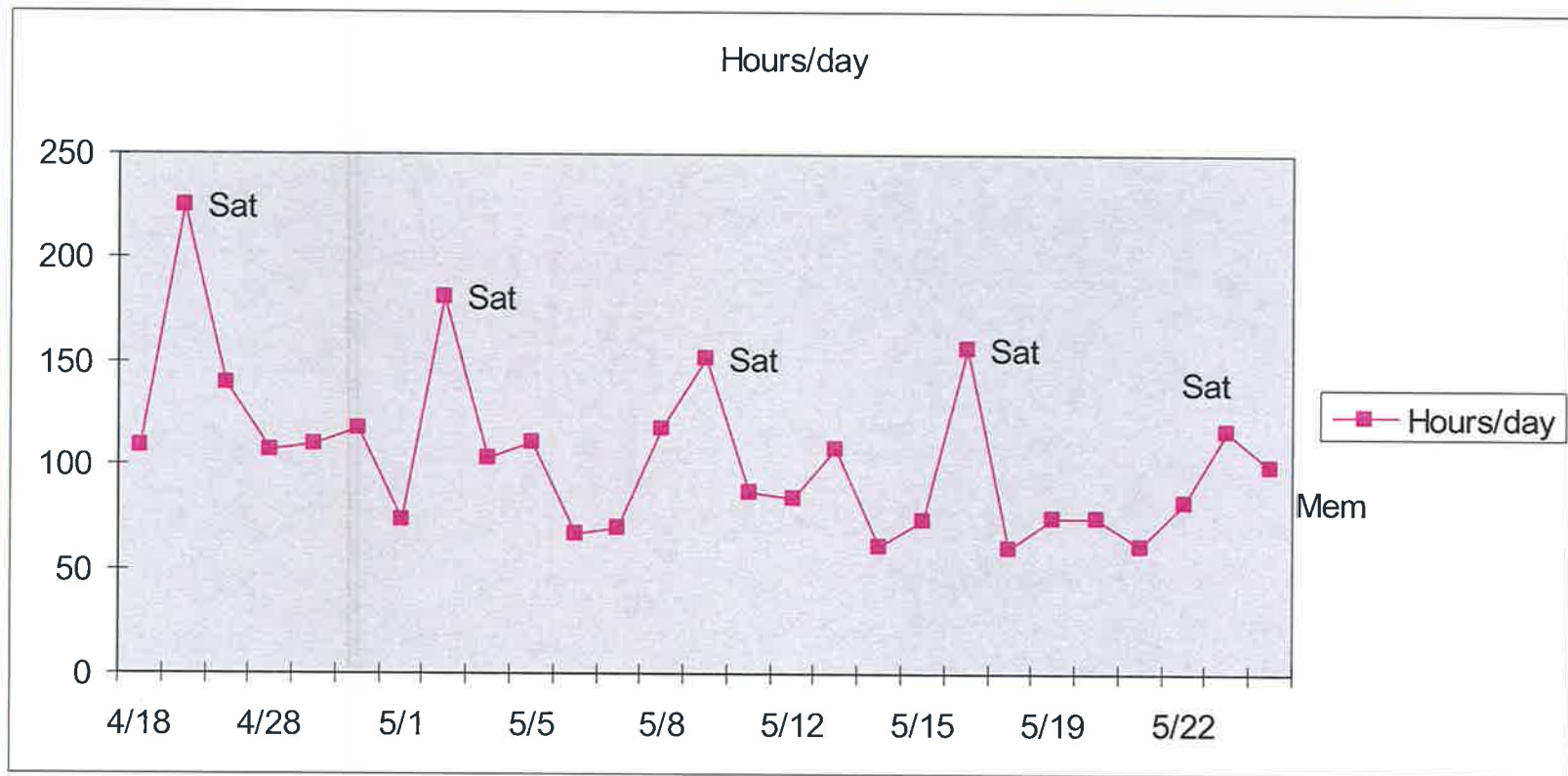
2009 Shooting Activity



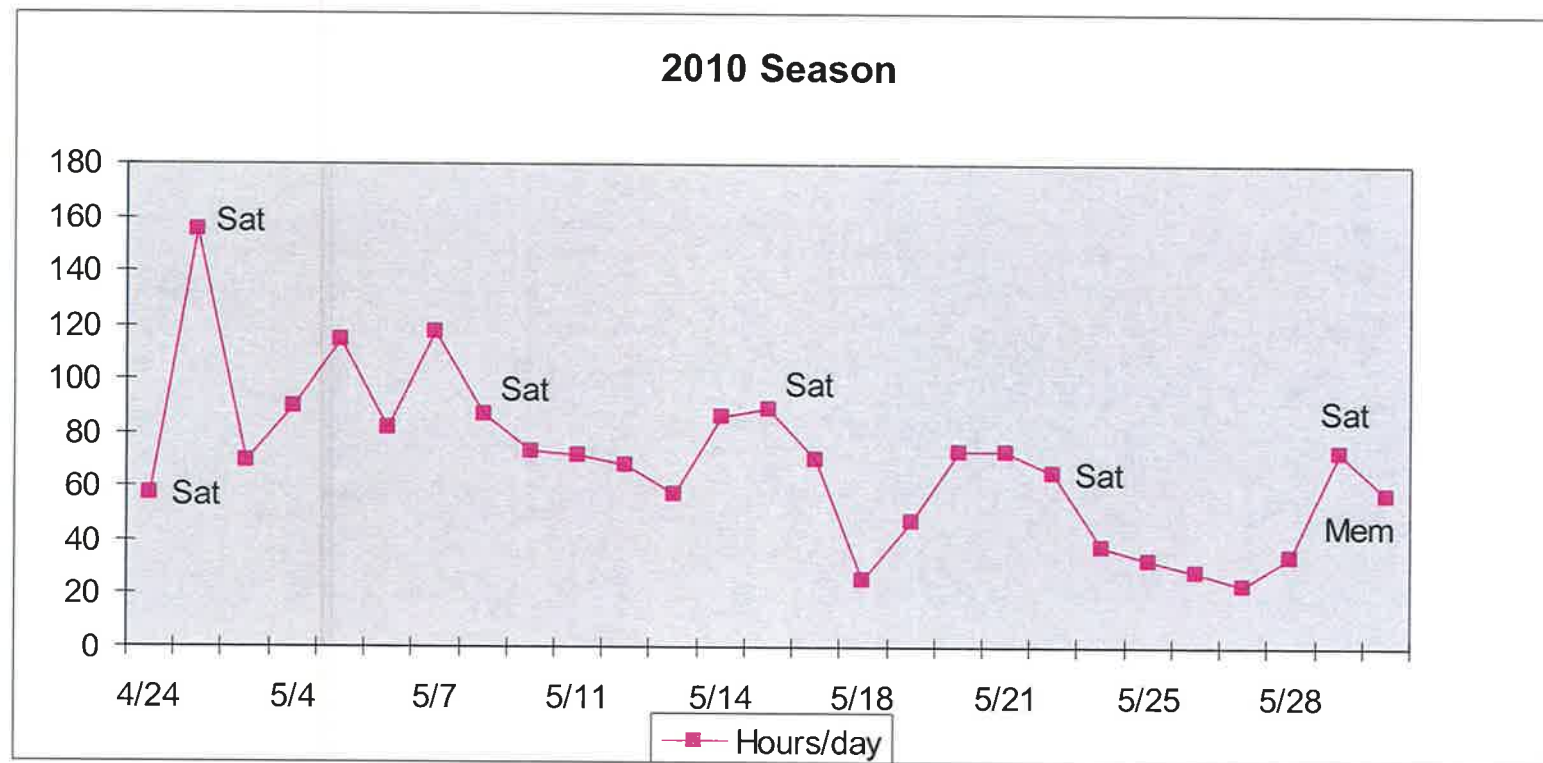
2010 Shooting Activity



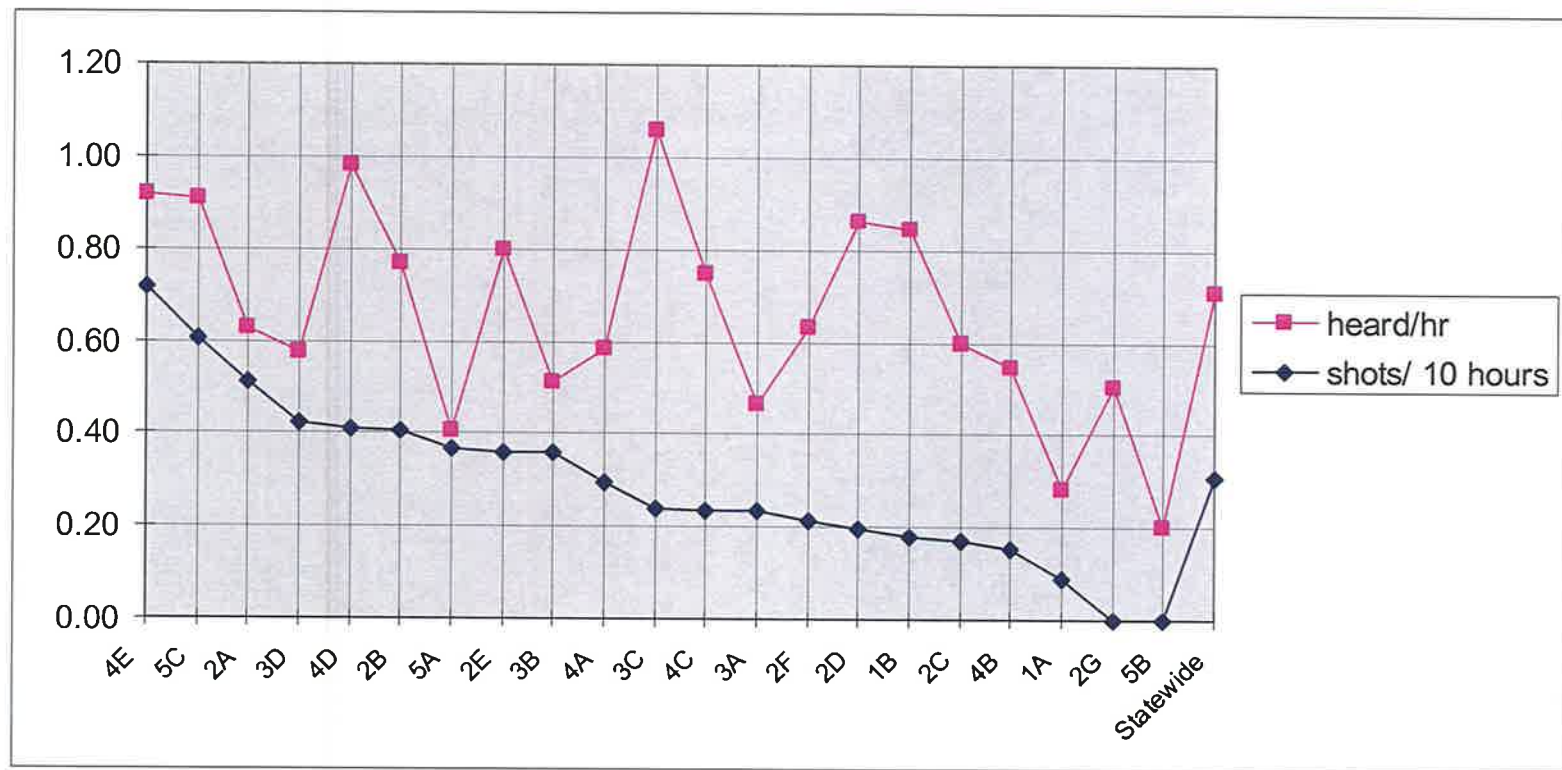
2009 Hunter Participation



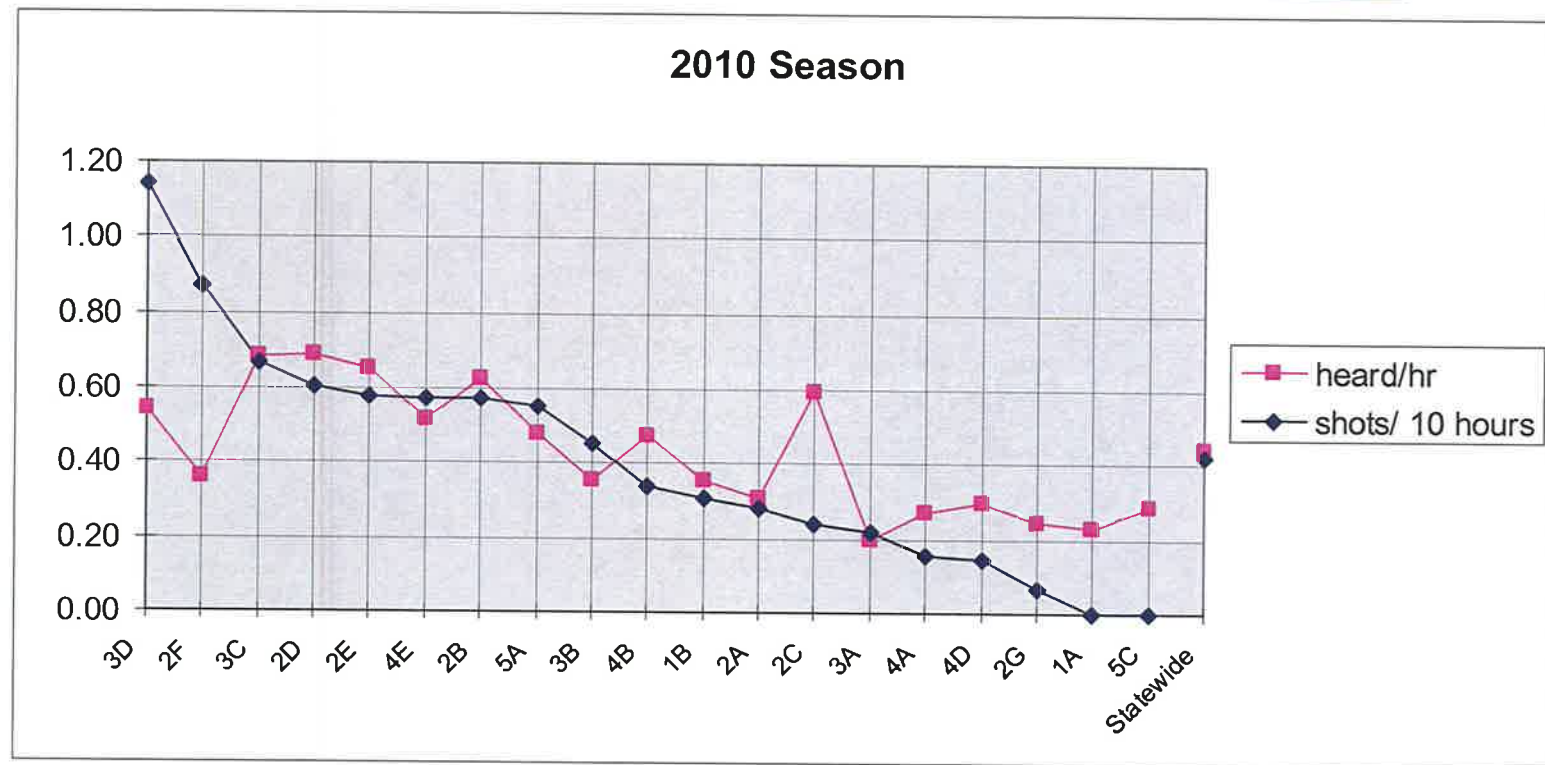
2010 Hunter Participation



2009 Breakdown of WMU's



2010 Breakdown of WMU's



2009 WMU Data

WMU	Hours	Gobbling (# of birds)	heard/hr	Gobbling Intensity	killed	shots/ 10 hours	shot at
4E	335	308	0.92	0.0	17	0.72	24
5C	17	15	0.91	0.0	1	0.61	1
2A	78	49	0.63	2.9	3	0.51	4
3D	118	68	0.58	2.9	1	0.42	5
4D	220	216	0.98	0.0	8	0.41	9
2B	50	38	0.77	2.9	1	0.40	2
5A	163	66	0.41	0.0	4	0.37	6
2E	194	155	0.80	3.5	6	0.36	7
3B	308	157	0.51	3.7	8	0.36	11
4A	102	60	0.59	3.0	1	0.29	3
3C	169	179	1.06	3.3	2	0.24	4
4C	171	128	0.75	0.0	2	0.23	4
3A	172	80	0.47	3.3	1	0.23	4
2F	189	119	0.63	3.4	3	0.21	4
2D	310	268	0.86	2.8	6	0.20	6
1B	333	282	0.85	3.2	5	0.18	6
2C	118	70	0.60	2.7	2	0.17	2
4B	194	106	0.55	2.9	1	0.15	3
1A	111	31	0.28	2.6	1	0.09	1
2G	78	39	0.50	3.0	0	0.00	0
5B	5	1	0.20	2.0	0	0.00	0
Statewide	3431	2435	0.71	2.3	73	0.31	106

2010 WMU Data

2010 Spring Season

WMU	Hours	Gobbling (# of birds)	heard/hr	killed	shot at	shots/ 10 hours	% of reported hours	% of shots
3D	35	19	0.54	3	4	1.14	2%	5%
2F	80.5	29	0.36	5	7	0.87	4%	9%
3C	89.5	61	0.68	6	6	0.67	5%	8%
2D	99	68	0.69	3	6	0.61	5%	8%
2E	258	168	0.65	11	15	0.58	14%	19%
4E	156.75	81	0.52	7	9	0.57	8%	11%
2B	17.5	11	0.63	0	1	0.57	1%	1%
5A	108	52	0.48	5	6	0.56	6%	8%
3B	154	55	0.36	4	7	0.45	8%	9%
4B	147.5	70	0.47	3	5	0.34	8%	6%
1B	196.5	70	0.36	5	6	0.31	10%	8%
2A	71	22	0.31	1	2	0.28	4%	3%
2C	42	25	0.60	1	1	0.24	2%	1%
3A	91	18	0.20	2	2	0.22	5%	3%
4A	63	17	0.27	1	1	0.16	3%	1%
4D	67.5	20	0.30	1	1	0.15	4%	1%
2G	143.5	35	0.24	0	1	0.07	8%	1%
1A	61	14	0.23	0	0	0.00	3%	0%
5C	14	4	0.29	0	0	0.00	1%	0%
Statewide	1895.3	839	0.44	58	80	0.42		

2009 Comparison by Land Type

			Gobblers					
Land Type	Hours	% of reported hours	Gobbling (# of birds)	heard/hr	Killed	shots/ 10 hours	shot at	% of shots
Private	2076	61%	1661	0.80	45	0.032	66	62%
State Owned	1271	37%	706	0.56	27	0.030	38	36%
Federal Owned	53	2%	53	1.00	1	0.019	1	1%
Other	32	1%	15	0.47	0	0.031	1	1%
statewide	3431		2435	0.71	73	0.031	106	

2010 Comparison by Land Type

2010 Spring Season								
Land Type ^a	Hours	Gobbling (# of birds)	heard/hr	killed	shot at	shots/ 10 hours	% of reported hours	% of shots
Private	1264.3	577	0.46	38	50	0.40	67%	63%
State	548.5	209	0.38	17	26	0.47	29%	33%
Federal	69.5	50	0.72	3	4	0.58	4%	5%
Other	13	3	0.23	0	0	0.00	1%	0%

Want to join

- If you or someone you know would be interested in participating in 2010 ...please send an e-mail to me at
jpanaro@panwtf.org